

CASO 3:



Operadores: Isaac Pascual Calleja
Salvatore Brugaletta

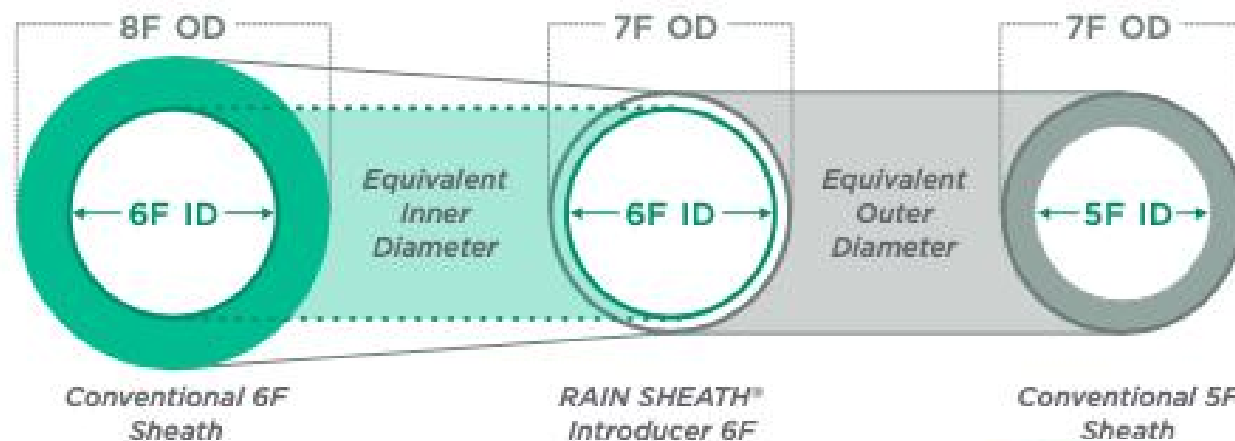
Moderadores:

- Eduardo Pinar Bermúdez
- Jose Fco. Díaz Fernández

Panelistas:

- *Santiago G. Solana Martínez*
- *Marco Alcocer Gamba*
- *Pablo Aguiar Souto*
- *Guillermo Aldama López*
- *Mónica Fernández Quero*

ACCESS RAIN SHEATH® INTRODUCER



Cordis



DESIGNED TO REDUCE THE RISK OF RADIAL ARTERY TRAUMA AND SPASM



LOW PROFILE DESIGN ▶
Available in:
7F in 6, 6F in 5, 5F in 4, 4F in 3
Enables maximum operating space while minimizing puncture size



PROPRIETARY KINK RECOVERY TECHNOLOGY™ ▶
Elastomeric properties allow the RAIN Sheath® Introducer to bend and flex to maintain lumen integrity

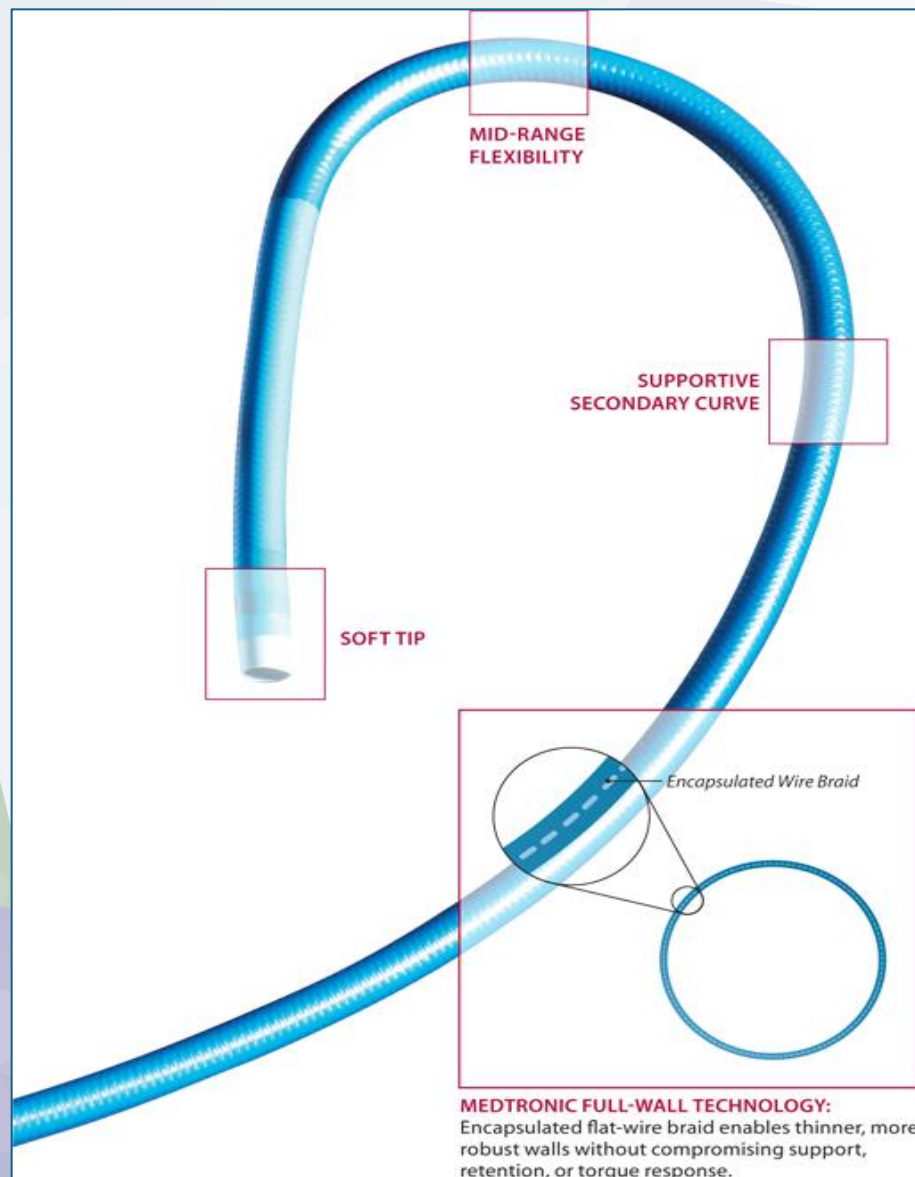


LUBRICIOUS HYDROPHILIC COATING ▶
Facilitates smoother, easier insertion and removal



HEXACUSPID HEMOSTASIS VALVE ▶
Designed to preserve hemostasis and reduce risk of bleedback





Medtronic LAUNCHER

LARGE LUMEN GUIDE BALANCING FLEXIBILITY AND SUPPORT

- Workhorse construction suitable for various anatomies and takeoffs
- Flexible distal segment enables you to engage for backup support
- Supportive secondary curve for backup support and curve retention

ENHANCED VISUALIZATION

- Larger lumens to maximize contrast flow for enhanced visualization
- Radiopaque marker band and nylon shaft

FULL-WALL TECHNOLOGY CONSTRUCTION

- Robust, thinner walls without compromising support or curve retention

FULL RANGE OF CORONARY AND PERIPHERAL CURVES

- 5F – 8F sizes available
- Custom lengths and custom program available

Workhorse Guide Wires

HI-TORQUE TURNTRAC™

HI-TORQUE TURNTRAC™ Guide Wire

RESPONSEASE Parabolic Core Grind



**Distal Core
Material:**
Elastinite™
Nitinol

**Cover Type or
Coils:**
Bare Coils

Tip Style:
Core-to-
tip

**Distal
Coatings:**
Hydrophilic

**Tip Load*
(g):**
0.8

TURNTRAC™

FLEX™
Tip Load*
(g):
0.6

HI-TORQUE VERSATURN™

HI-TORQUE VERSATURN™ Guide Wire

RESPONSEASE Parabolic Core Grind



**Distal Core
Material:**
Elastinite™
Nitinol

**Cover Type or
Coils:**
Bare Coils

Tip Style:
Core-to-
tip

**Distal
Coatings:**
Hydrophilic

**Tip Load*
(g):**
0.8



Abbott

HI-TORQUE BALANCE MIDDLEWEIGHT™

HI-TORQUE BALANCE MIDDLEWEIGHT™ Guide Wire



**Distal Core
Material:**
Elastinite™
Nitinol

**Cover Type
or Coils:**
Bare Coils

Tip Style:
Shaping
Ribbon

Distal Coatings:
Hydrophilic or
Hydrophobic

**Tip
Load*
(g):**
0.6

GUIDEZILLA TM II

Guide Extension Catheter

Hypotube Transition
Optimized for reduced
device interaction

Green Ergonomic Hub
Unique and easily
identifiable

Radiopaque Helical Collar
Designed for improved
strength and visibility

Z-Glide TM Coating
For improved
deliverability

Expanded Size Matrix
6, 7 & 8F 25 cm;
6F 40cm



LCD MONITOR DISPLAY
21" screen with Full
HD 1920 x 1080
resolution



**ISOLATION
TRANSFORMER**
Power Button



**FAST PULLBACK MOTOR
DRIVE UNIT**
Best Practice:
Always keep the MDU
clamped to the
permanent sled



**DOCKING STATION &
TABLET**
13.3" LED-
backlight screen
with capacitive
touch



KEYBOARD & MOUSE
Up to 2
wireless mice



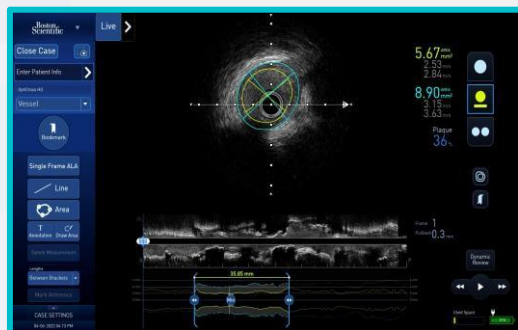
ACQUISITION PC
MDU Connection at
the back



AVVIGO™ Multi-Modality Guidance System



Key Features

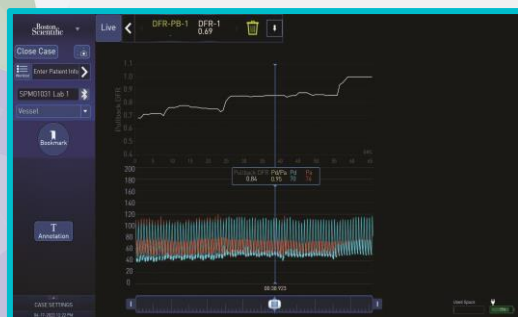
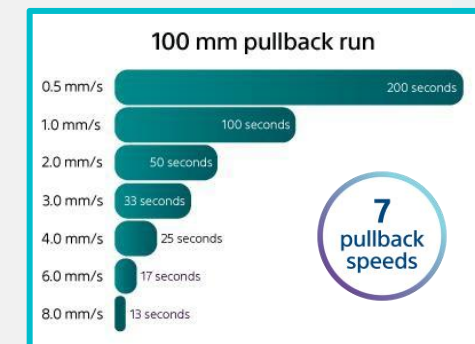


Automated Lesion Assessment (ALA™) Precise Vessel Measurements¹

- AI-enhanced lumen and vessel borders
- Vessel profile
- Key frame markers

Fast Pullback ^{ss} High quality images at the pullback speed you want

Automatic pullback now includes faster speeds up to 8 mm/s allowing for quicker vessel imaging



PhysioMap™ Enhanced DFR guidance*

Optimize your treatment decisions by **quickly locating** regions of pressure change during a pullback

Tableside Control ^s Complete control from the sterile field

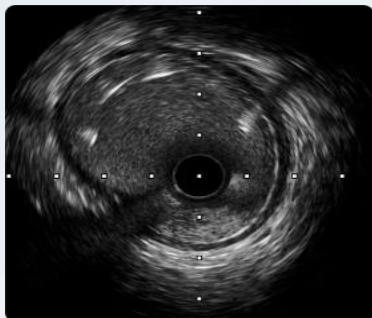
Operate IVUS and capture physiological measurements on your integrated system without leaving the sterile field



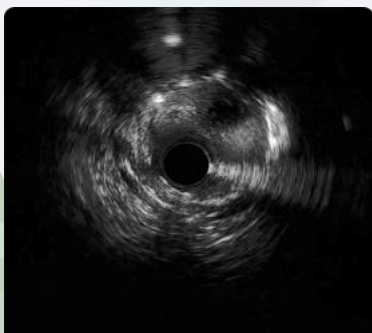
OPTICROSS HD™

60 MHz Coronary Imaging Catheter

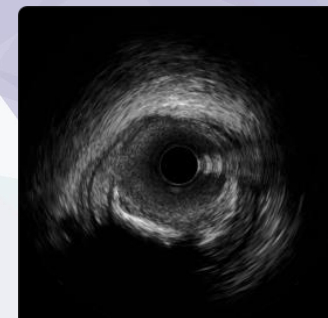
High definition images with depth to see
small to 6mm vessels



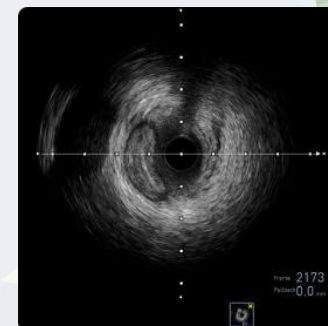
Malapposed Stent



Red Trombus



Dissection



False Lumen

Well-balanced engineering
design
Good Deliverability

5F Compatible
Assist in more
cases

Advanced 60 MHz Composite
Transducer

Precise image with 6 mm depth for
small to large vessel assessment

Rotawire Drive™

Enhanced torque transmission for predictable and precise lesion access in calcified lesions

Unsurpassed Torque Transmission

Able to navigate calcified lesions with 1:1 torque through tortuous anatomy, providing access for ROTAPRO™

Improved Core Wire Durability

Improved kink resistance and wear resistance compared to the legacy Rotawire



Highly Visible Safety Tip

platinum coil to provide visibility and added safety during Rotational atherectomy

**Boston
Scientific**
Advancing science for life™

ASAHI Core Wire Technology

One-piece stainless steel core wire transmits torque for predictable steering

Reduce reliance on wire exchange devices, saving procedural time and lowering overall device spend

ROTAPRO™ ROTATIONAL ATHERECTOMY SYSTEM

**Boston
Scientific**
Advancing science for life™

**Gold standard Atherectomy system on an enhanced, easy-to-use platform,
designed to modify lesion compliance in calcified lesions**

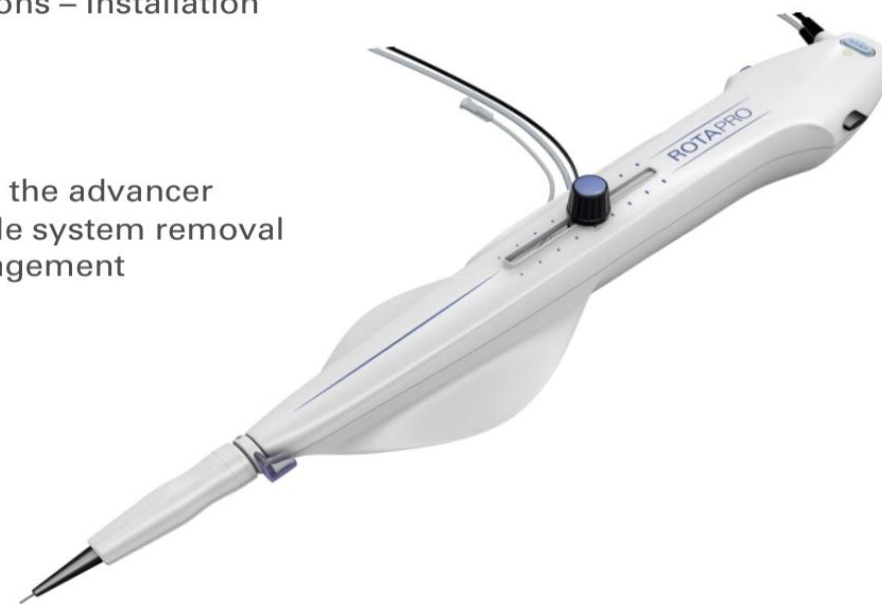


Console

- Vibrant Digital Display – Enhanced feedback and deceleration indicator
- Streamlined Connections – Quick and easy setup
- Small console with 2 possible orientations – Installation flexibility

Advancer

- Easy-to-use Controls – Incorporated on the advancer
- Ergonomic Dynaglide™ Design – Simple system removal
- Hybrid Harness – Improved cable management



Easier to use | Easier to setup | Trusted performance

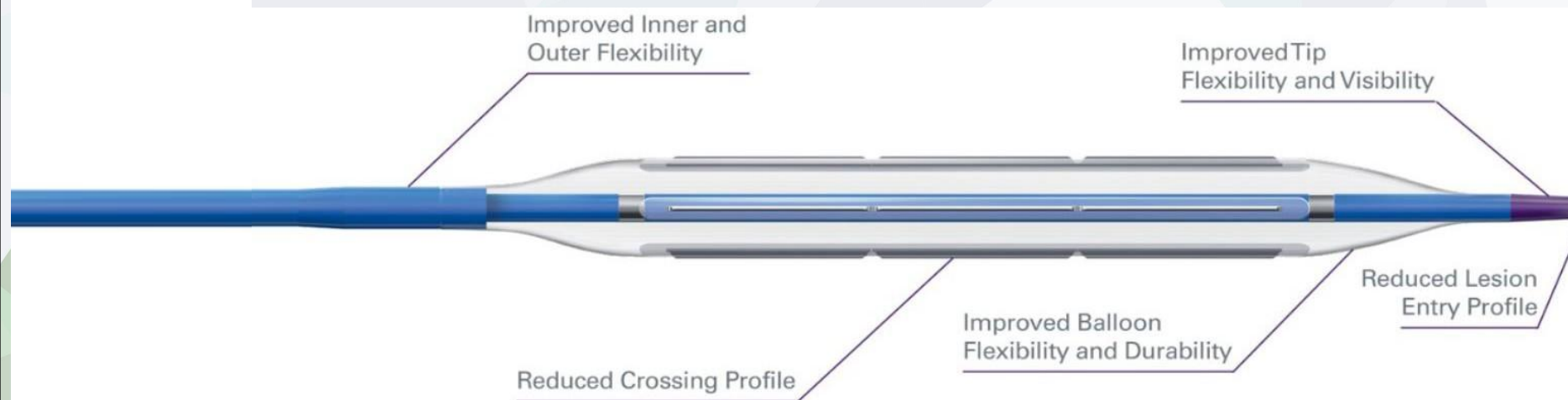
Manufacturer: Boston Scientific

WOLVERINETM Coronary Cutting Balloon

The WOLVERINETM Design Advantage

The WOLVERINE Cutting Balloon is designed with proprietary atherotomes on a low pressure non-compliant balloon

**Boston
Scientific**
Advancing science for lifeTM



NC EMERGETM
Balloon Platform

2.0 - 4.0 MM
BALLOON DIAMETERS

6, 10, 15 MM
WORKING LENGTH

PROPRIETARY
ATHEROTOMES

EQUIPPED WITH
Z-GLIDETM HYDROPHILIC
COATING

5F (2.0-3.25)
6F (3.5-4.00)
GC COMPATIBLE

Tamaño pequeño de 1,2mm



Perfil reducido del cuerpo para permitir el uso simultáneo



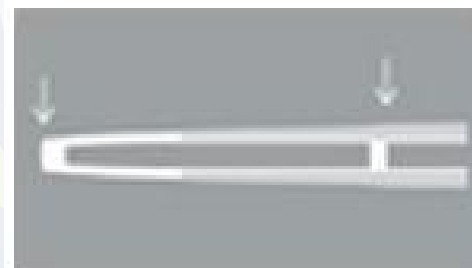
Nuevo recubrimiento hidrófilo



Opciones de catéteres monorail y over-the-wire



Diseño del balón y la punta



Emmerge™



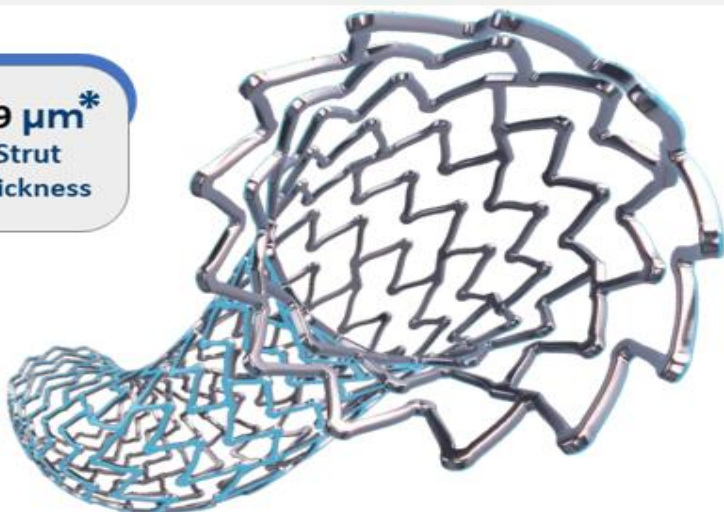
SYNERGY™ MEGATRON

Everolimus-Eluting PtCr Stent
with Abluminal Bioabsorbable Polymer

Purpose-built for large proximal vessels

Boston Scientific

89 µm*
Strut
Thickness



*Strut Thickness: 89 µm

*Polymer Thickness: 4 µm

- **Purpose-built for large proximal vessels**
 - New stent architecture with same abluminal, bioabsorbable polymer as SYNERGY for early healing
 - **Design specifically for large proximal vessels such as LM, Bifurcations, RCA, Ostial and Calcified Lesions**
- **Engineered to maximize performance in large vessels:¹**
 - Designed to have best in-class radial and axial strength
 - Overexpansion capability from 3.5mm to 6.0mm
 - Uniform scaffolding at overexpansion
 - Increased radiopacity

Available stent lengths (mm)	8, 12, 16, 20, 24, 28, 32
-------------------------------------	----------------------------------

Available stent diameters (mm)	3.50, 4.00, 4.50, 5.00
---------------------------------------	-------------------------------



1. Boston Scientific bench test data on file.

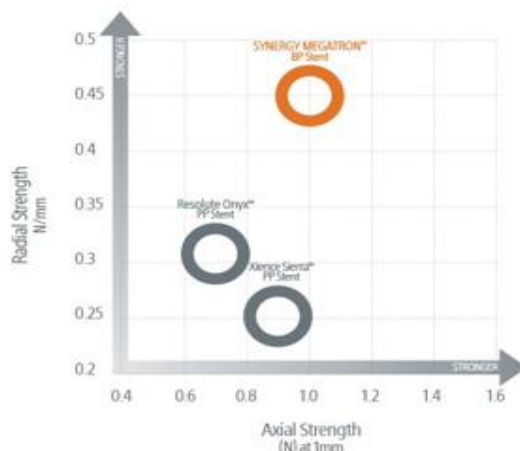


SYNERGY™ MEGATRON

BP Stent – Key Design features

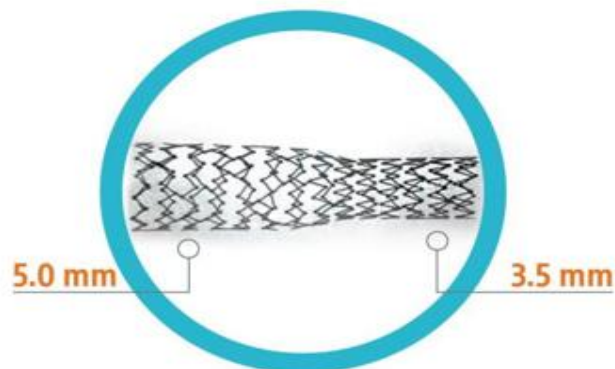
**Best-in-Class
Axial &
Radial Strength¹**

**For Proximal,
Fibrotic and
Calcified Lesions**



**Uniform Lesion
Scaffolding**

**To Maximize
Lumen Gain**



**Unmatched
Overexpansion²**

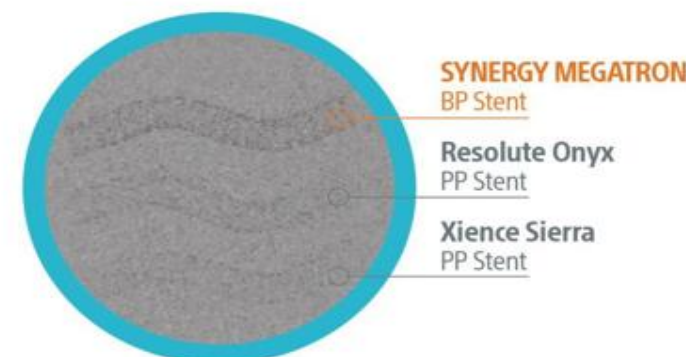
**To Accommodate Wide
Diameter Mismatch**

One model (3.5-5.0mm) with overexpansion to 6.0 mm.³



**Maximum
Visibility⁴**

**For Better
Placement
Accuracy**



NC Emerge TM

Post-dilatation PTCA Balloon



- 5F (1.67 mm) compatible
- 0.017" / 0.43 mm lesion entry profile
- 20 atm (2026.5 kPa) Rated Burst Pressure for 2.0 mm-4.0 mm diameter balloons; 18 atm (1823.85 kPa) RBP for 4.5 mm – 6.0 mm diameter balloons
- Bi-Segment inner shaft combines a flexible distal segment with a pushable proximal segment
- Improved Kissing Balloon* (allows 2 Monorail catheters in a 6F GC)

**Boston
Scientific**
Advancing science for lifeTM